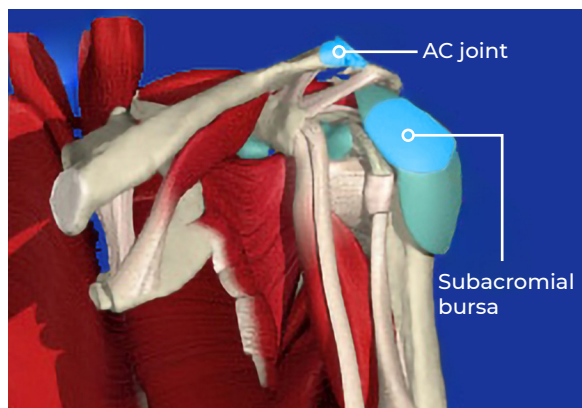
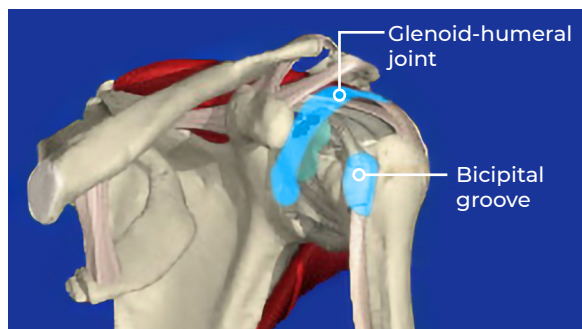


THANK YOU FOR PURCHASING SAWBONES SHOULDER CONDUCTIVE INJECTION MODEL

This injection trainer can be used to teach or demonstrate needle placement for aspiration and joint injection. With the correct needle insertion, an audible tone will sound indicating proper placement of the chosen area. Palpation of the major anatomical landmarks may also be performed. Additional conductive structures may be added upon request. With a little care and maintenance your new model should provide you with many years of service.



COMPONENTS & ANATOMY

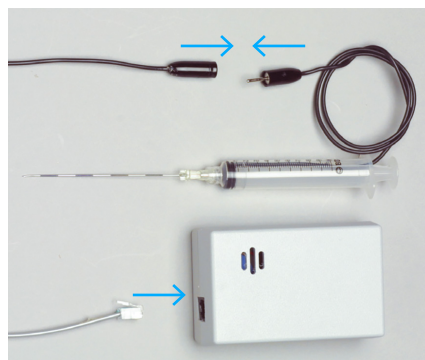
MODELS INCLUDE:

- Soft tissue injection shoulder
- Audio feedback box with leads
- Needle assembly with lead
- Dry erase marker

CONDUCTIVE ANATOMICAL POINTS:

- Subacromial bursa
- Bicipital groove
- Glenoid-humeral joint
- AC joint

NOTE: Replacement parts available at www.sawbones.com



SET-UP INSTRUCTIONS

1. Lay out all parts and inspect for shipping damage.
2. Insert wire lead from syringe into the black wire.
3. Insert male phone connector into audio feedback box.



OPERATION INSTRUCTIONS

1. Locate the appropriate spot for injection (i.e. joint space bursa).
2. Insert needle into location. The audio feedback box will emit a tone when the tip of the needle has made contact with the correct area.
3. Use the dry erase marker to identify injection targets.

CARE & MAINTENANCE

Your model can be wiped down with any mild cleaner. Use only the dry erase marker on the model. Standard ink can not be removed. Store in a dry, dark place out of direct contact with sunlight.

IMPORTANT: To maintain audio feedback, do not remove plunger assembly or needle from the syringe. This model is NOT intended for injection of fluids.

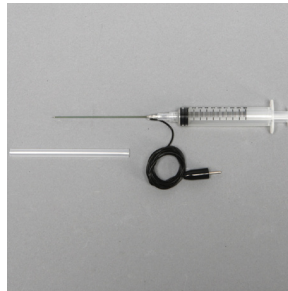
REPLACEMENT PARTS (WWW.SAWBONES.COM)



1620
Conductive audio
feedback emitter



1620-35
Conductive Needle, 3.5"
Needle Length



1620-15-1
Conductive Needle
Assembly, 3.5" Needle
length



1620-5
Conductive Needle Set,
3.5" Needle length



1485-104
Shoulder skin Sleeve
Replacement